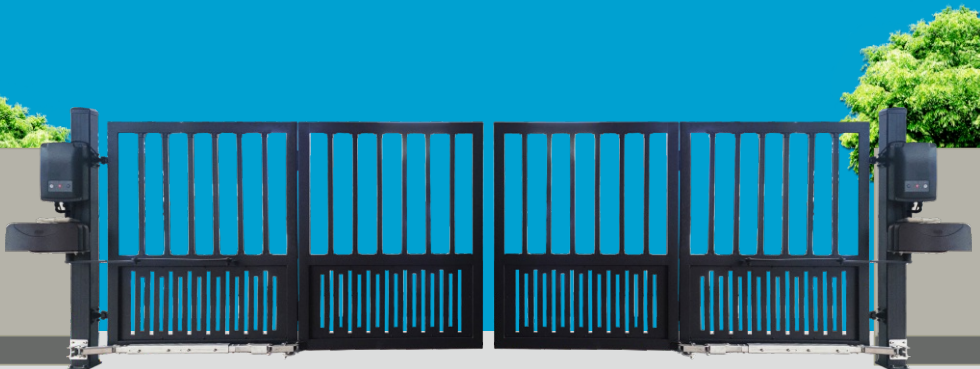


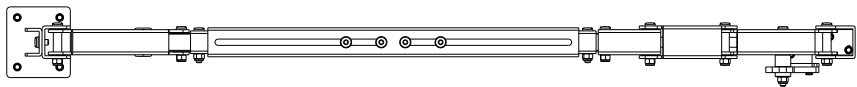


TRACKLESS FOLDING SWING GATE HARDWARE KIT

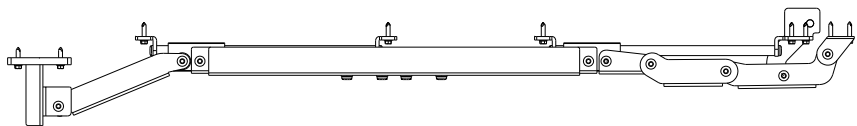
Installation Introductions



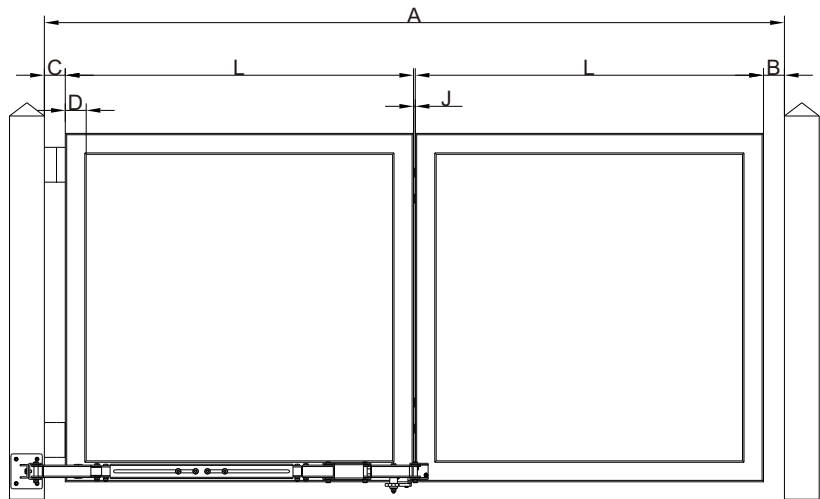
TRACKLESS FOLDING SWING GATE HARDWARE KIT



Front View after Installation



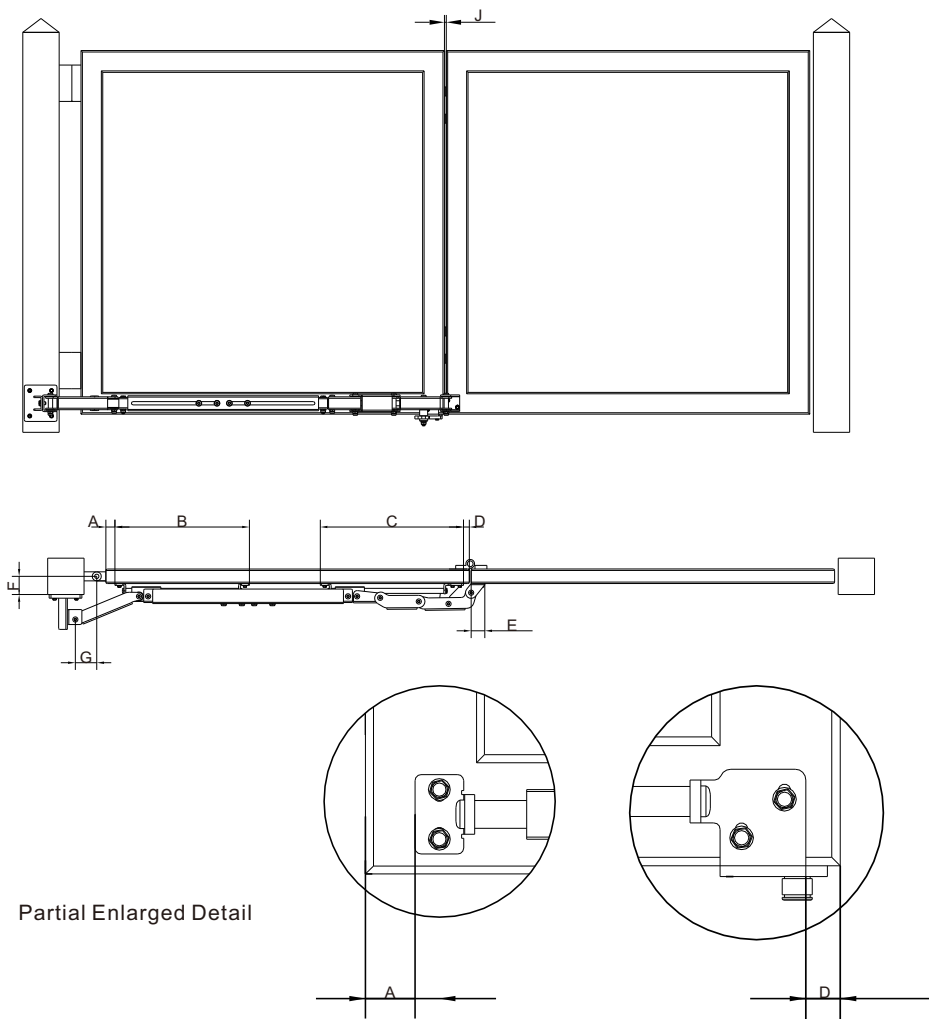
Vertical View after Installation



Calculation of Width (one Panel): $L = (A - B - C - J) / 2$ Measuring Unit: mm

A mix-max	B	C	J	D mix
2080-3080	15	70	5	50

TRACKLESS FOLDING SWING GATE HARDWARE KIT



Partial Enlarged Detail

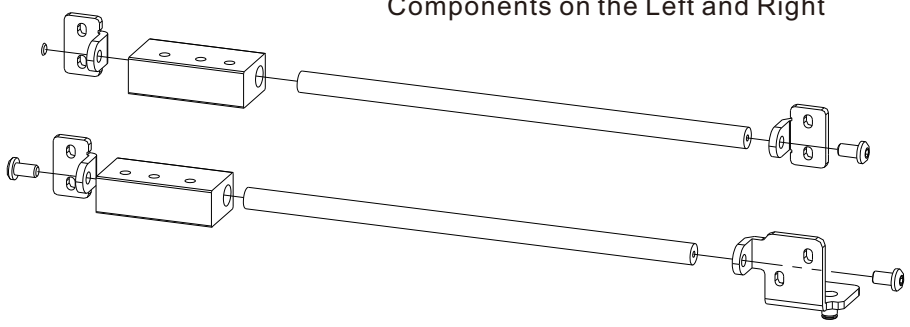
Installation Dimensions Measuring Unit: mm

A	B	C	D	E	F	G	J
25	370	395	16	38	59	70	5

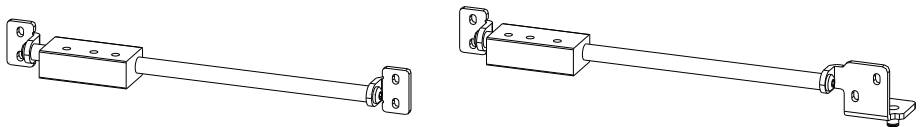
TRACKLESS FOLDING SWING GATE HARDWARE KIT

Assemble three Main Connecting Components

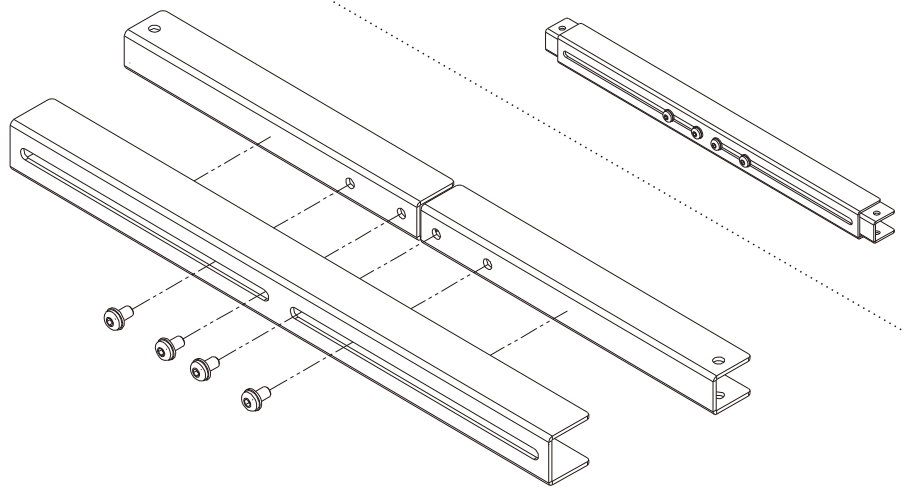
Assemble Stainless Sliding Rod Connecting Components on the Left and Right



Completed Assembly View



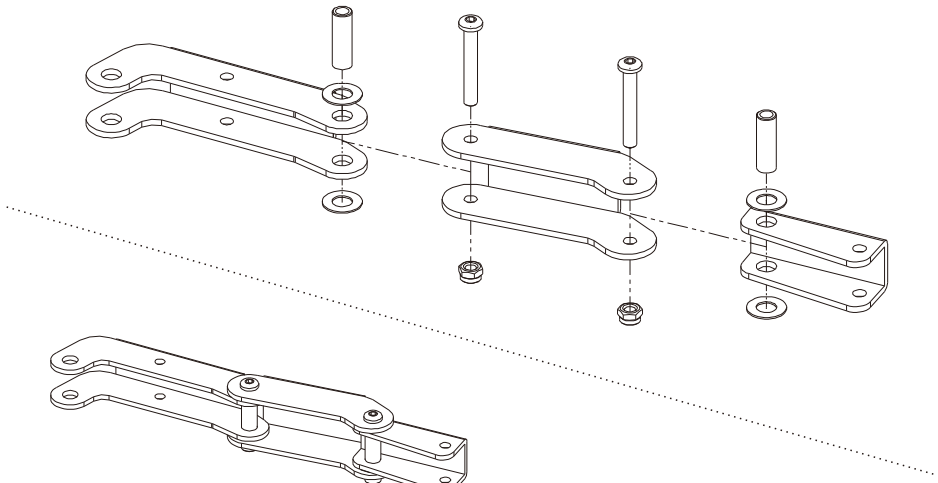
Completed Assembly View



Assemble Adjustable Telescopic Cover

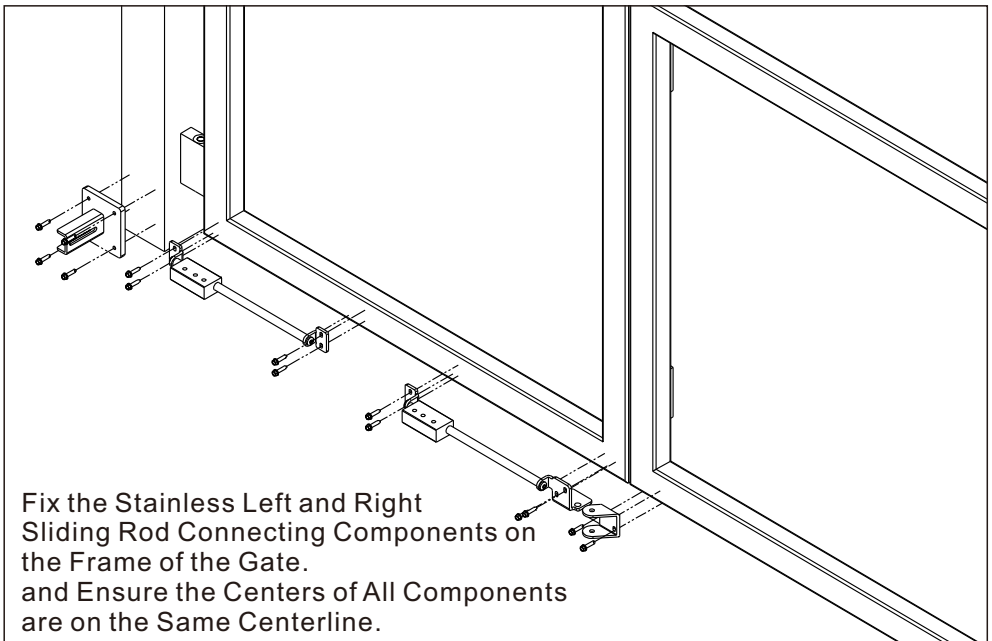
TRACKLESS FOLDING SWING GATE HARDWARE KIT

Assemble Polyarticular Connecting Components of Folding Frame

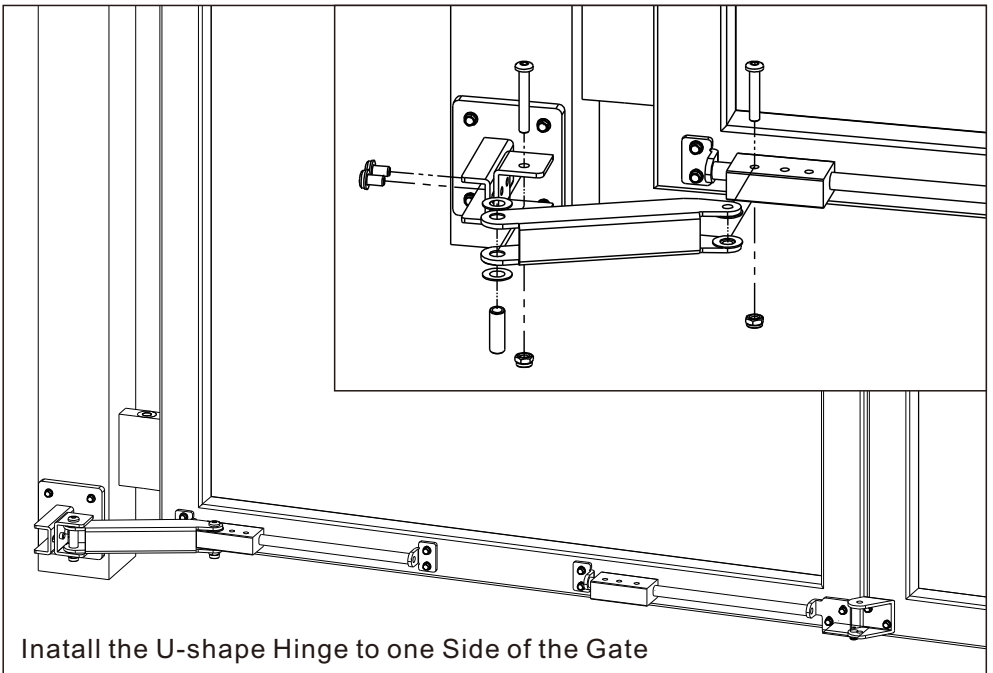
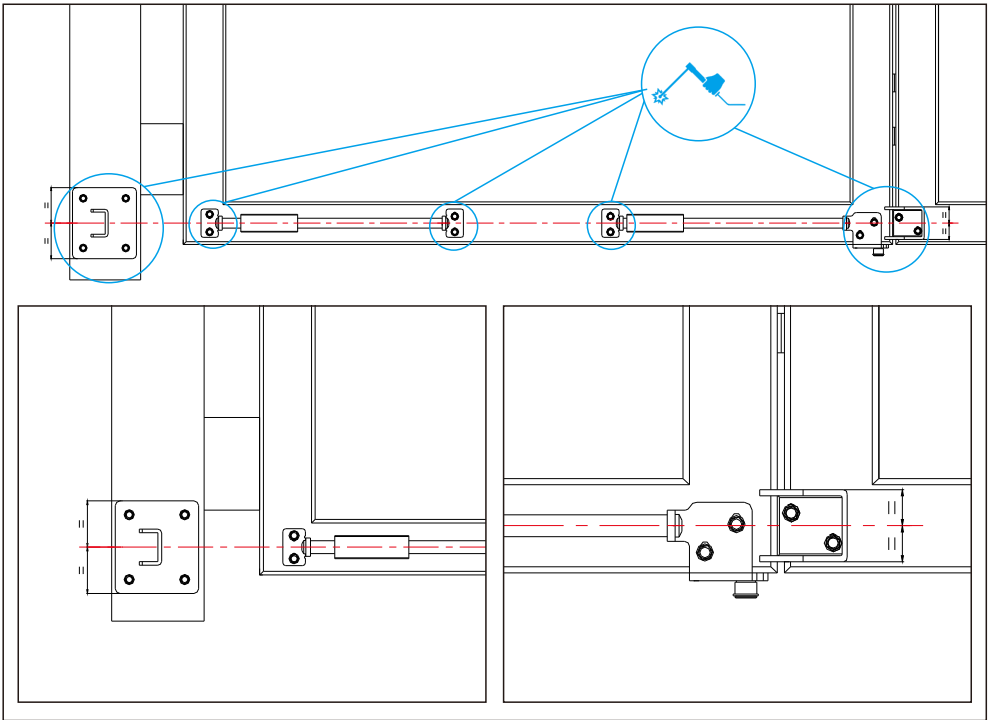


Completed Assembly View

Install three Main Connecting Components on the Frame of the Gate.

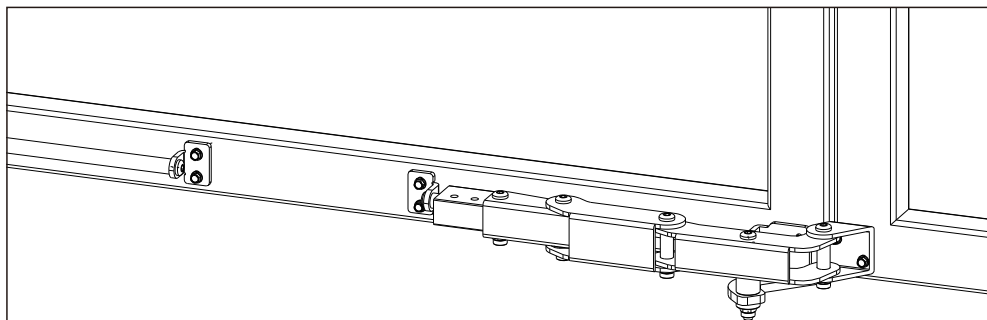


TRACKLESS FOLDING SWING GATE HARDWARE KIT

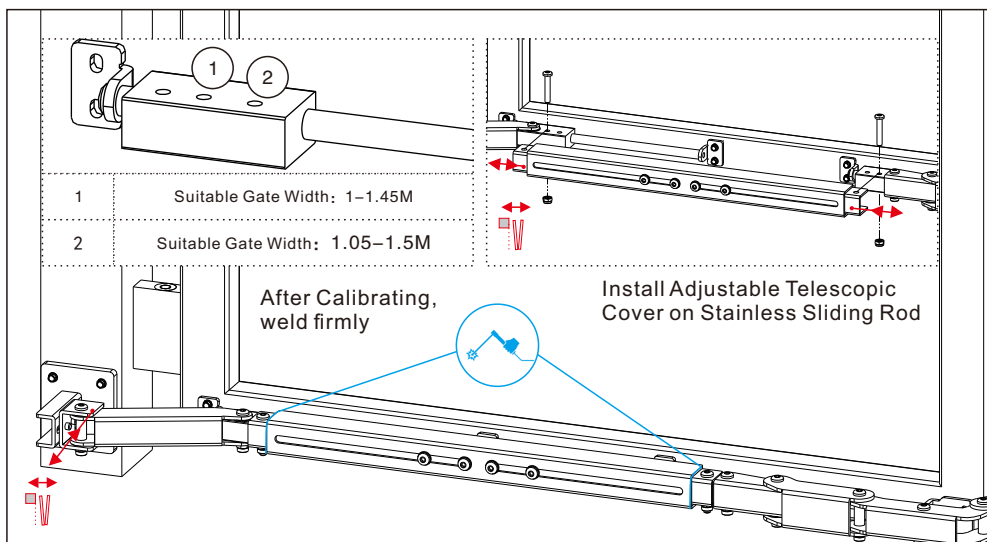
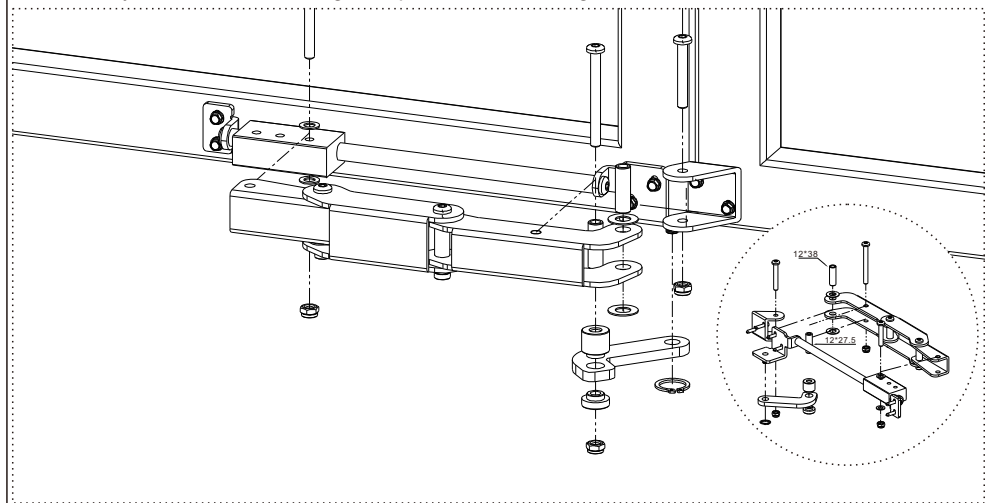


Install the U-shape Hinge to one Side of the Gate

TRACKLESS FOLDING SWING GATE HARDWARE KIT



Install Polyarticular Connecting Components of Folding Frame on the Gate





**TRACKLESS FOLDING SWING
GATE HARDWARE KIT**