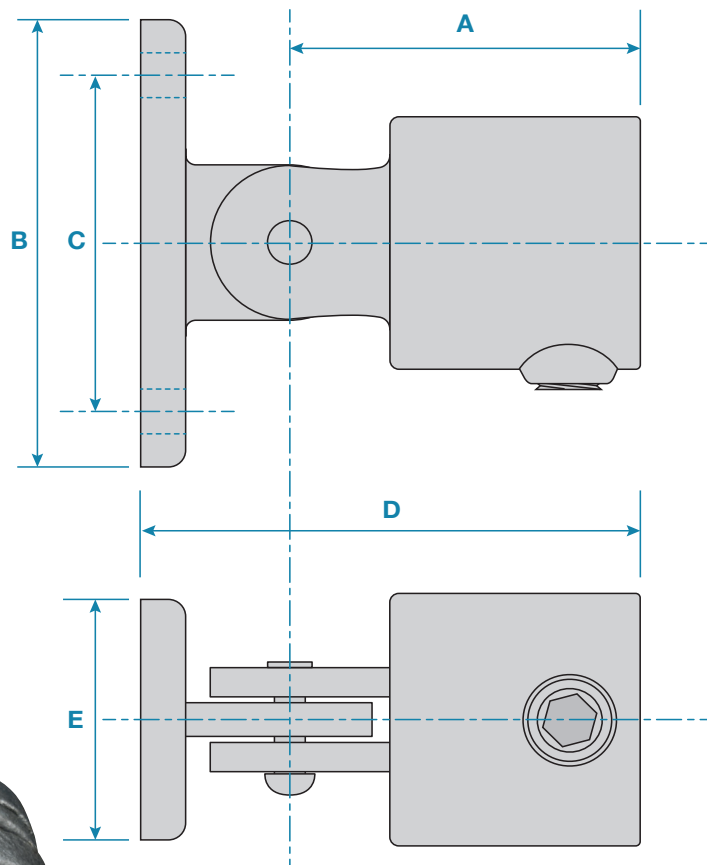
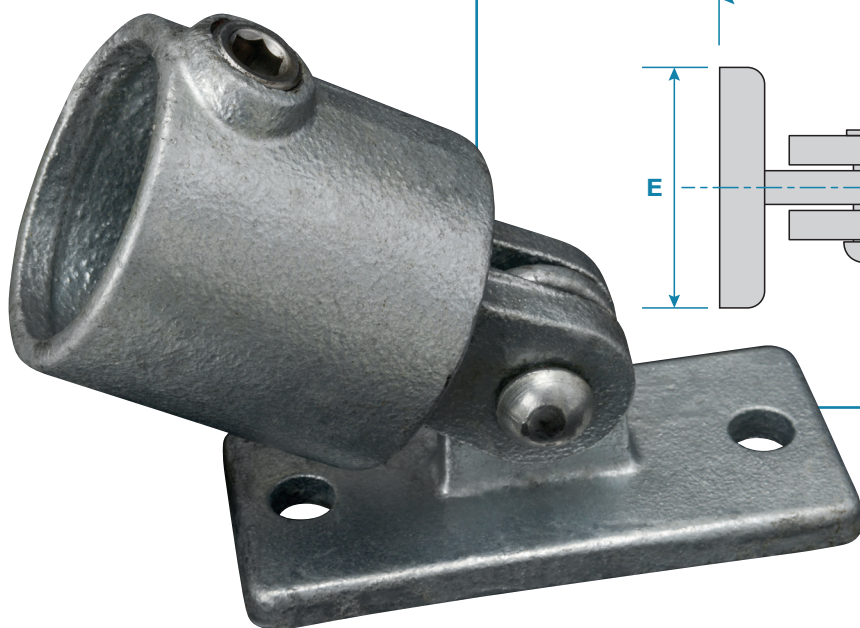


A swivel fitting, ideal for fitting angled tubes to walls, the swivel has a travel of approximately 85° from the vertical in each direction, it should never be used as base fitting for guardrail systems.

**NOT DESIGNED TO WITHSTAND LATERAL LOADS.**



Code	A	B	C	D	E	Hole dia.	Weight
<b>KC169A</b>	60mm	112mm	80mm	98mm	45mm	11mm	0.65kg
<b>KC169B</b>	63mm	112mm	85mm	98mm	52mm	11mm	0.71kg
<b>KC169C</b>	70mm	112mm	85mm	102mm	52mm	11mm	0.86kg
<b>KC169D</b>	76mm	112mm	85mm	112mm	52mm	11mm	0.96kg
<b>KC169E</b>	90mm	112mm	85mm	128mm	52mm	11mm	1.23kg