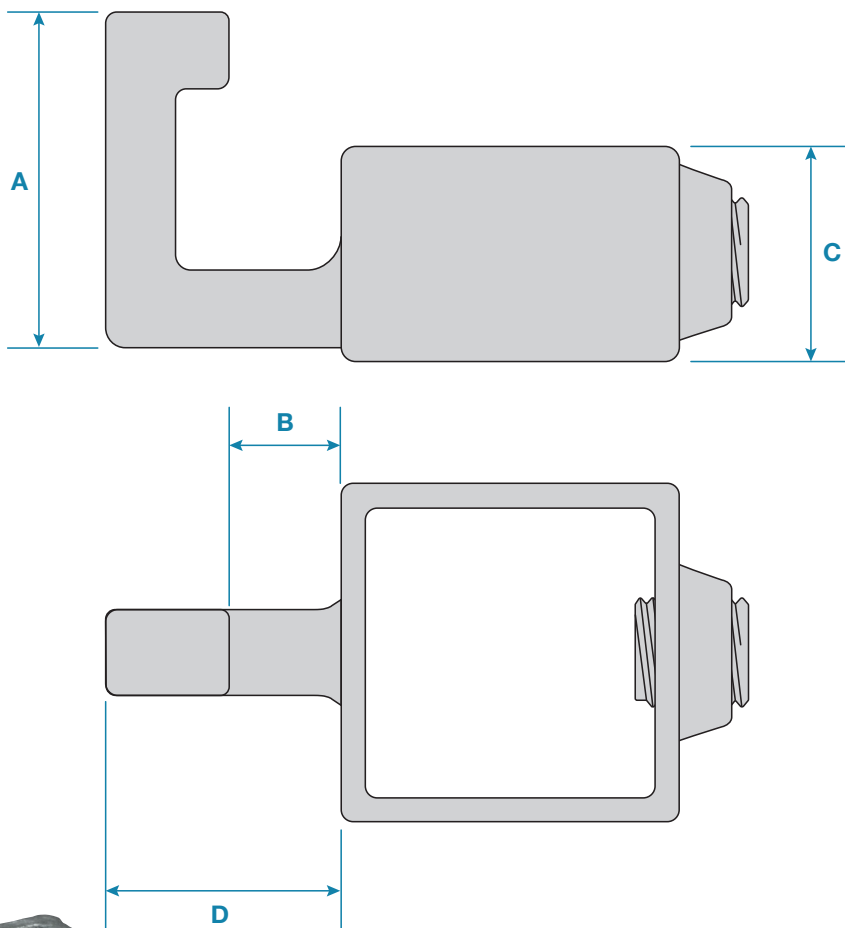


Product Data Sheet

Key Clamp KC182 Square



A simple hook parallel to the tube direction, typical use is for locating chains in place across openings. It is not recommended as a permanent chain location. This clamp does not allow tubes to be joined within the fitting.

Please Note: Dimensions for guide only. Components may vary slightly from the sizes shown.

Updated: 06-05-2025

Code	A	B	C	D	Weight
KC18225	37mm	12mm	24mm	36mm	0.17kg
KC18240	55mm	18mm	33mm	40mm	0.3kg