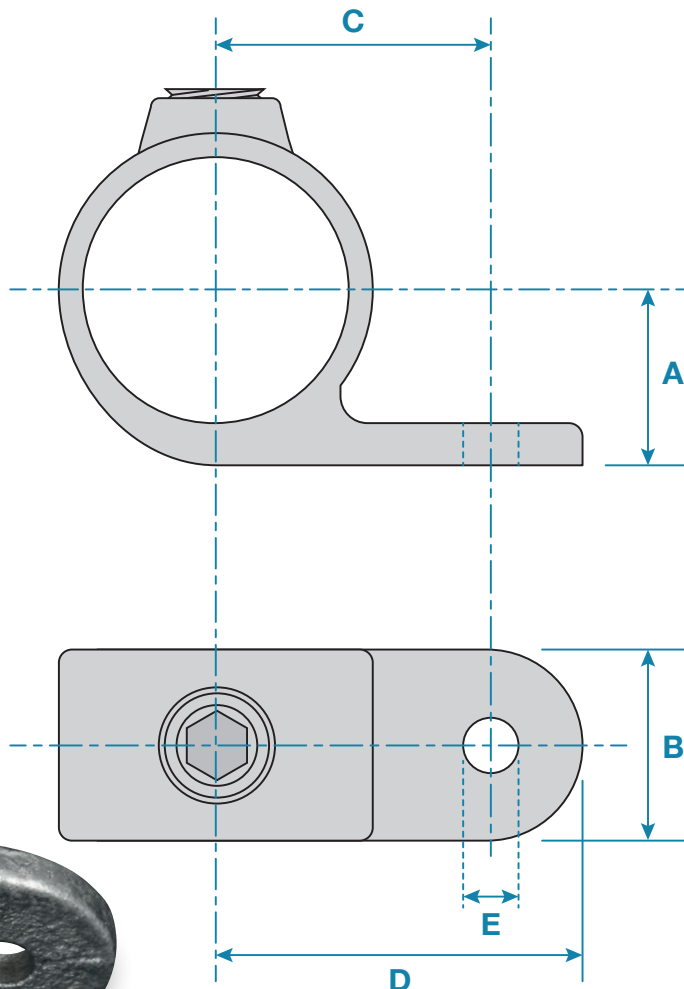


A single lugged fixing bracket, normally used to fix boards or display panels almost flush to the tube. This clamp does not allow tubes to be joined within the fitting.



Please Note: Dimensions for guide only. Components may vary slightly from the sizes shown.

Updated: 20-01-2025

Code	A	B	C	D	E	Weight
KC199B	26mm	32mm	44mm	60mm	10mm	0.24kg
KC199C	30mm	36mm	49mm	67mm	10mm	0.34kg
KC199D	33mm	36mm	52mm	70mm	10mm	0.38kg