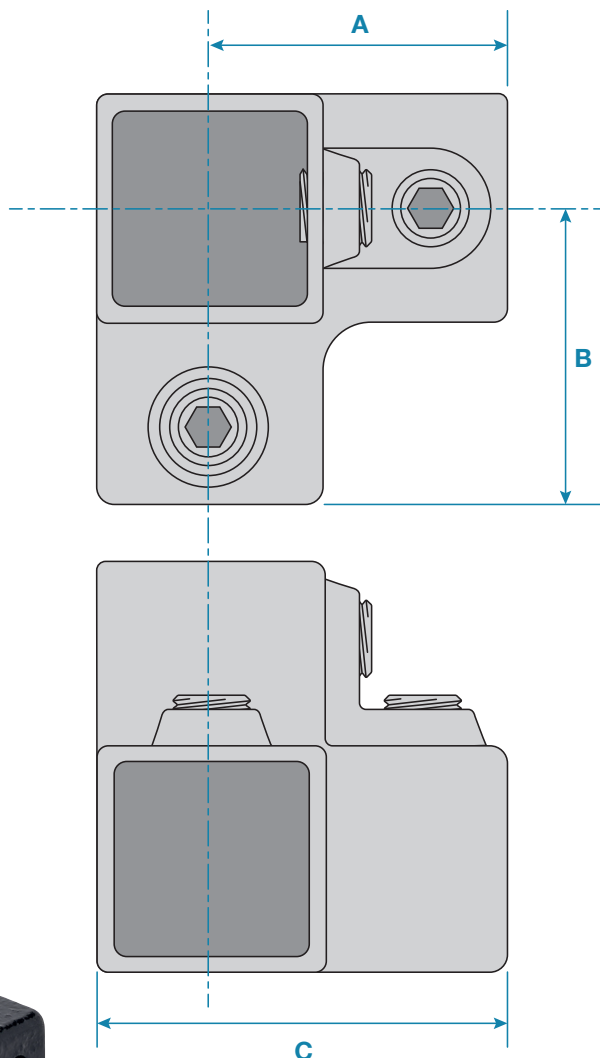
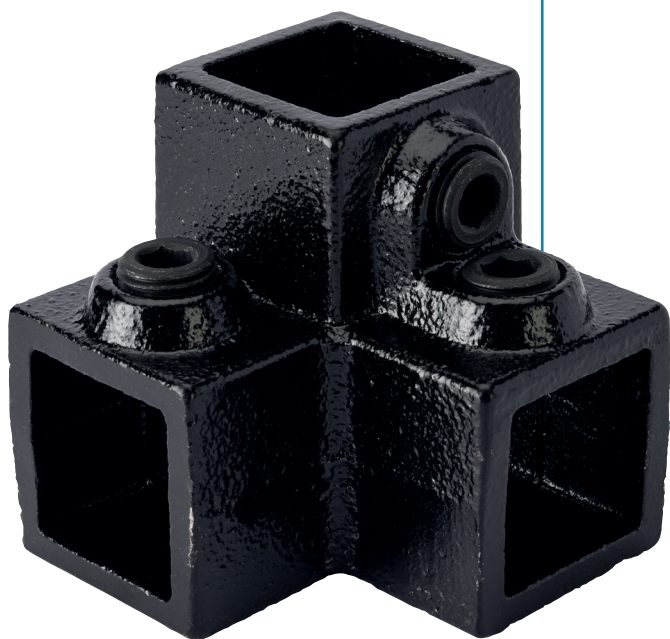


A three way enclosed 90° corner joint, typical use is on straight and level guardrail for connecting the top rails to the vertical at a 90° corner. It can also be used to create enclosed corner joints on other rectangular structures.



Please Note: Dimensions for guide only. Components may vary slightly from the sizes shown.

Updated: 06-05-2025

Code	A	B	C	Weight
KCE12825	41mm	44mm	61mm	0.42kg