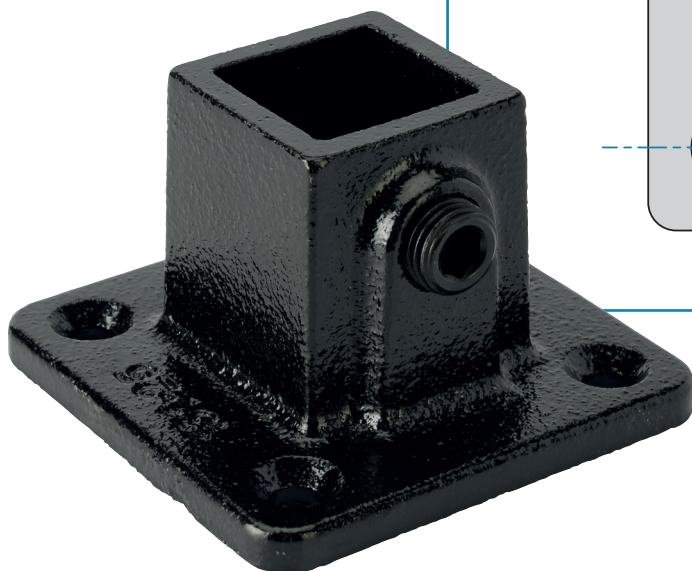
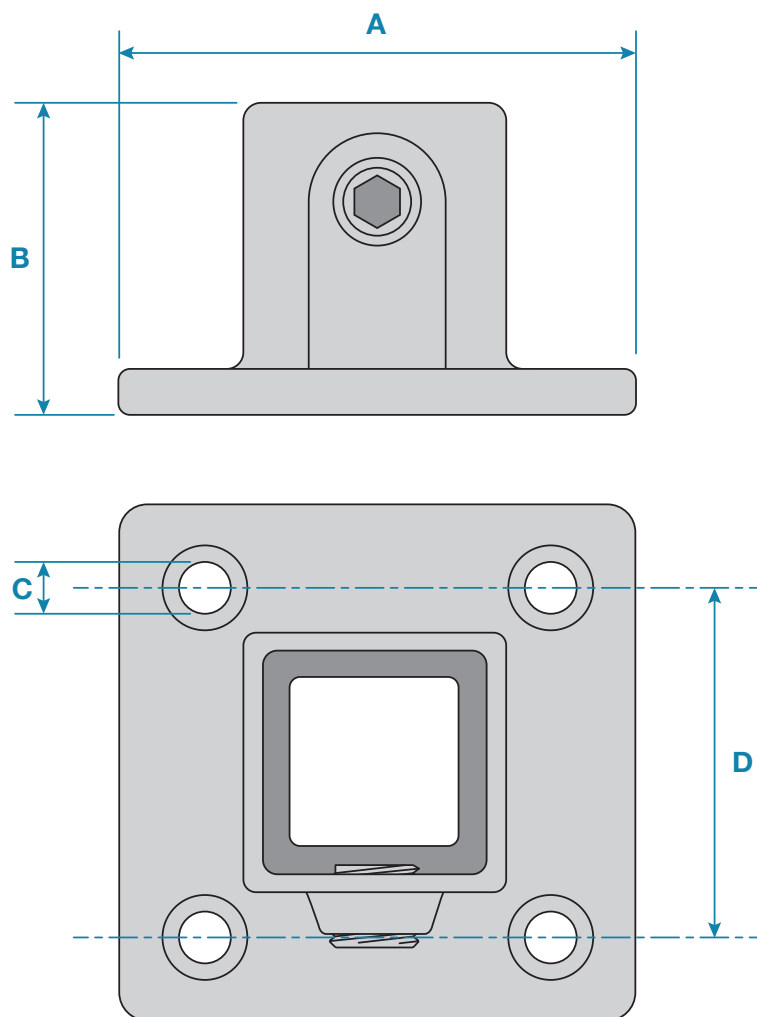


The design is ideal as a flange for terminating rails to a wall or similar structures. It can be used as a base flange for non load bearing structure. IT IS NOT RECOMMENDED FOR USE AS A BASE PLATE OR IN LOAD BEARING APPLICATIONS.



Please Note: Dimensions for guide only. Components may vary slightly from the sizes shown.

Updated: 06-05-2025

Code	A	B	C	D	Weight
KCE13125	74mm	48mm	6mm	52mm	0.4kg