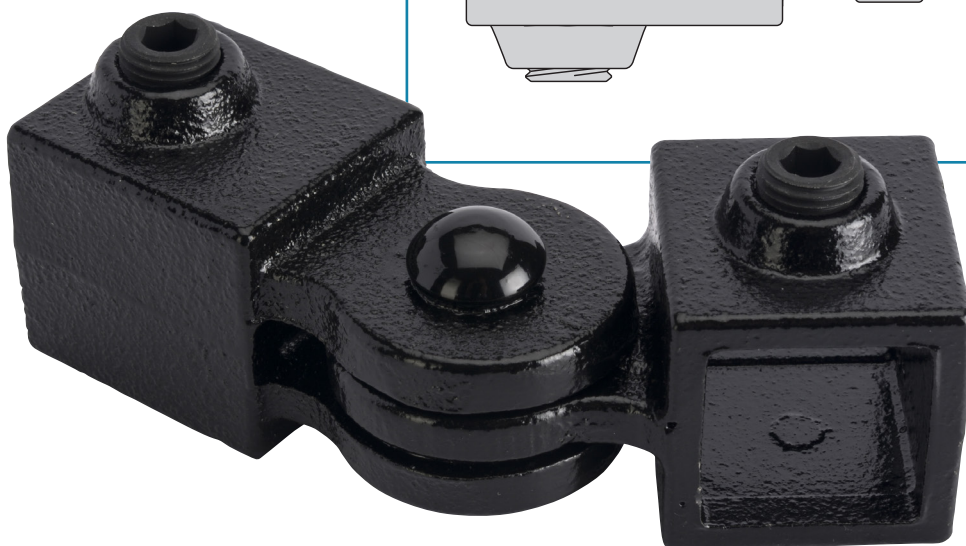
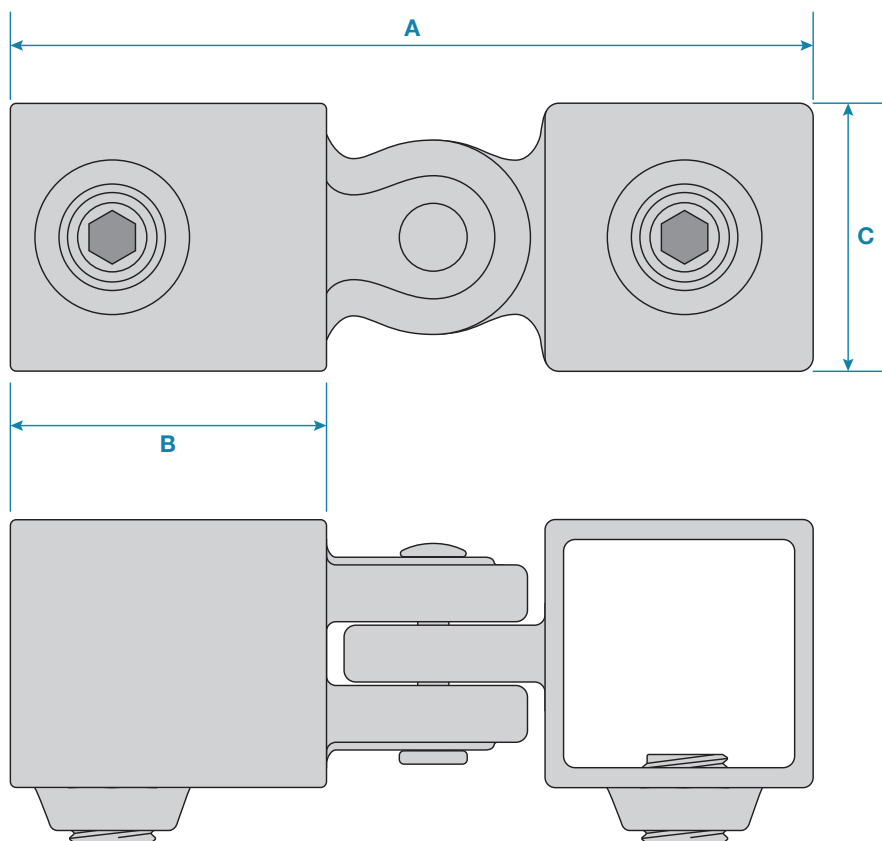


A single swivel combination fitting, the swivel has a travel of approximately 85° from the horizontal in both vertical directions. This clamp does not allow tubes to be joined within the fitting. NOT DESIGNED TO WITHSTAND LOADS.



Please Note: Dimensions for guide only. Components may vary slightly from the sizes shown.

Updated: 06-05-2025

Code	A	B	C	Weight
KCE17325	120mm	41mm	39mm	0.53kg