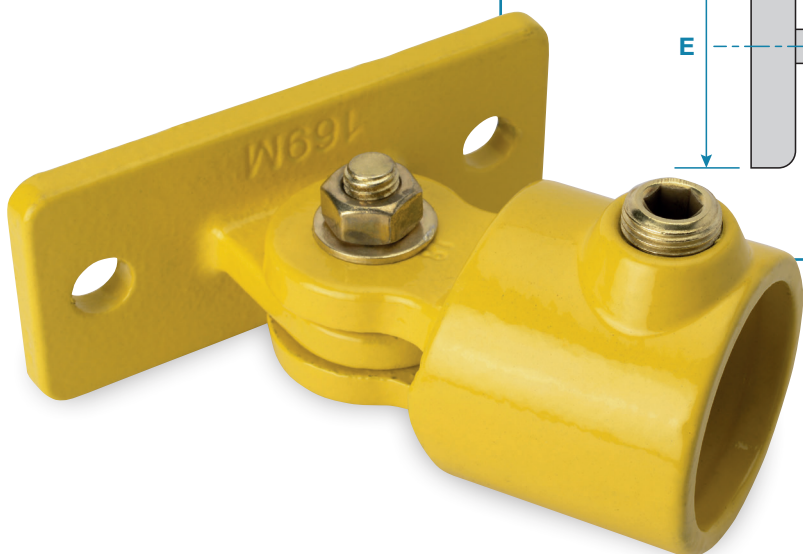
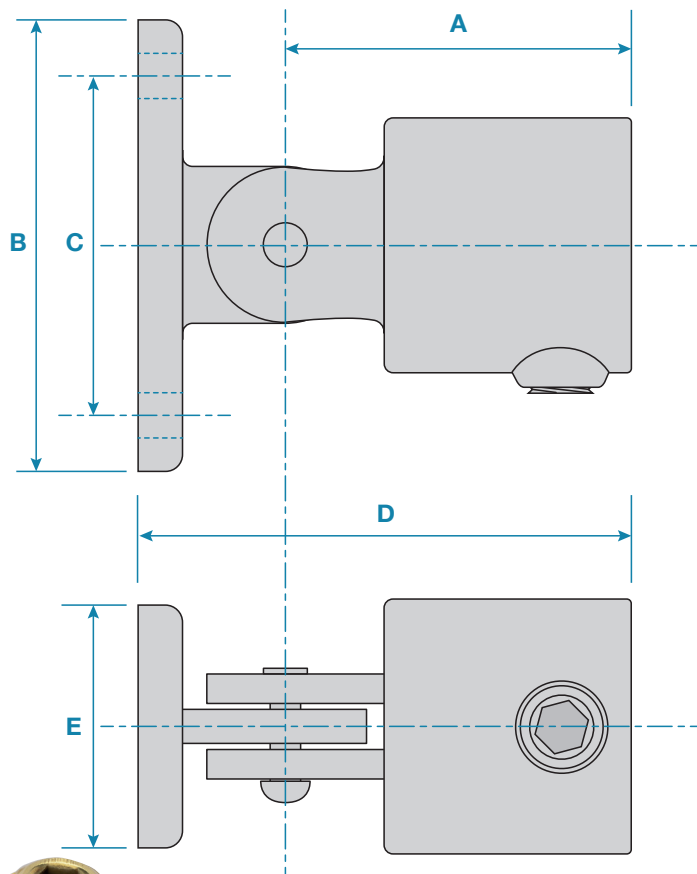


# Product Data Sheet

## Key Clamp KCY169

A swivel fitting, ideal for fitting angled tubes to walls, the swivel has a travel of approximately 85° from the vertical in each direction, it should never be used as base fitting for guardrail systems.  
NOT DESIGNED TO WITHSTAND LATERAL LOADS.



**Please Note:** Dimensions for guide only. Components may vary slightly from the sizes shown.

Updated: 30-07-2024

Code	A	B	C	D	E	Hole dia.	Weight
<b>KCY169B</b>	63mm	112mm	85mm	98mm	52mm	11mm	0.71kg
<b>KCY169C</b>	70mm	112mm	85mm	102mm	52mm	11mm	0.86kg
<b>KCY169D</b>	76mm	112mm	85mm	112mm	52mm	11mm	0.96kg

DC Handrails & Ironwork Parts Ltd,  
3 Whickham Industrial Estate, Swalwell, Newcastle upon Tyne, NE16 3DA

[www.dciron.co.uk](http://www.dciron.co.uk)